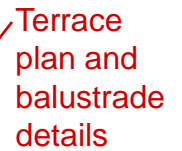


These highly detailed drawings were required to satisfy the Landmarks Commission this year.



- Cleverly invented custom glass mount

^We had the sterile modern railings removed and replaced them with classic balusters and safety glass panels

Penthouse

These highly detailed drawings were required to satisfy the Landmarks Commission this year.



The entire building façade was required to establish aesthetic impact. 1150 Fifth Avenue.

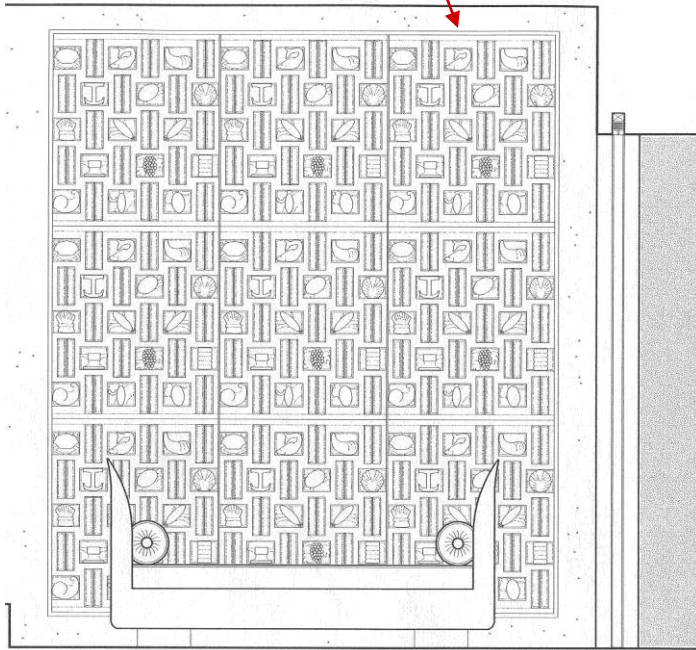


Resulting interior and view of Central Park

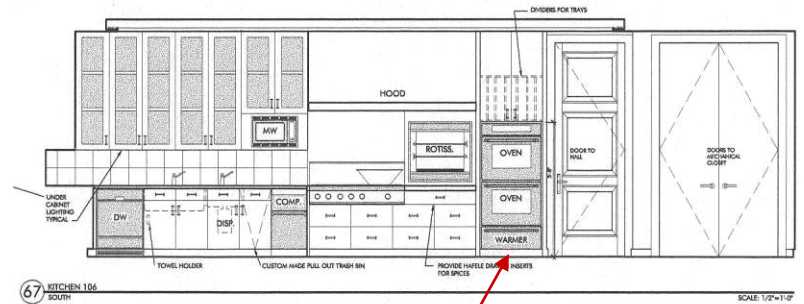
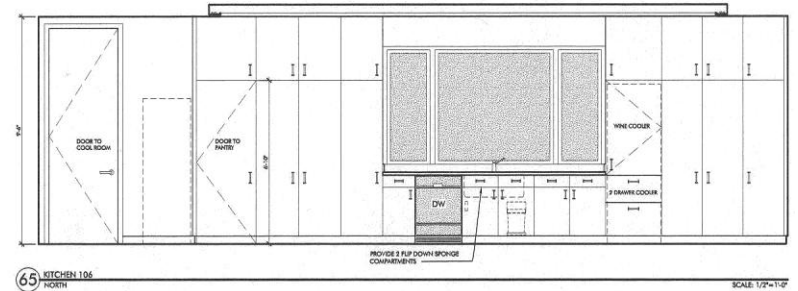
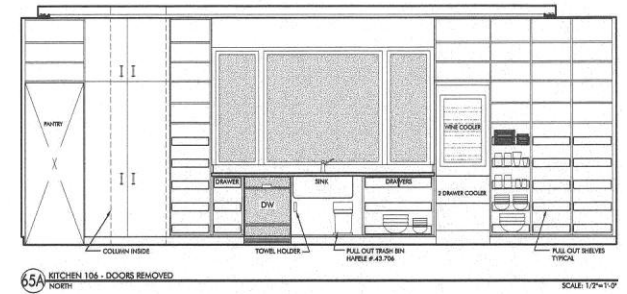
Luxury Residential

Wall elevations for a New Yorker's mansion in the city

Thai wooden screen from his collection,
incorporated into wall



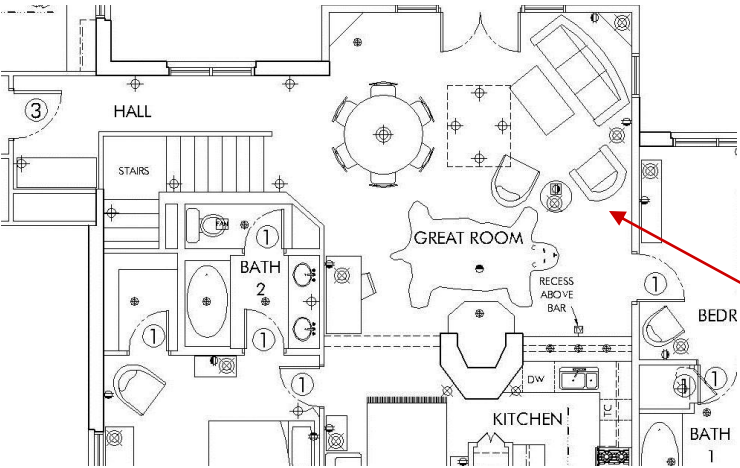
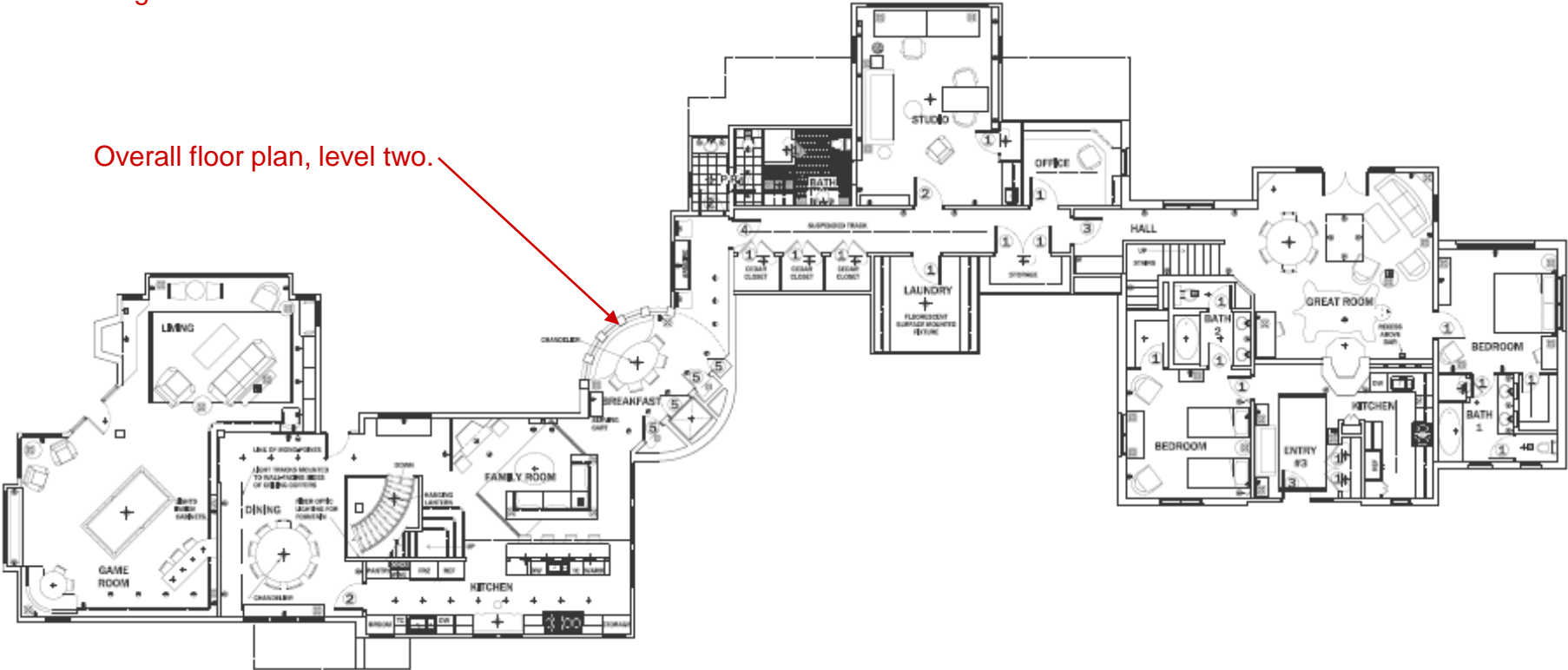
HIS BATHROOM AND VESTIBULE



High performance kitchen

Luxury Residential
Large vacation home in Telluride Colorado

Overall floor plan, level two.



Furniture plan detail

Luxury Residential

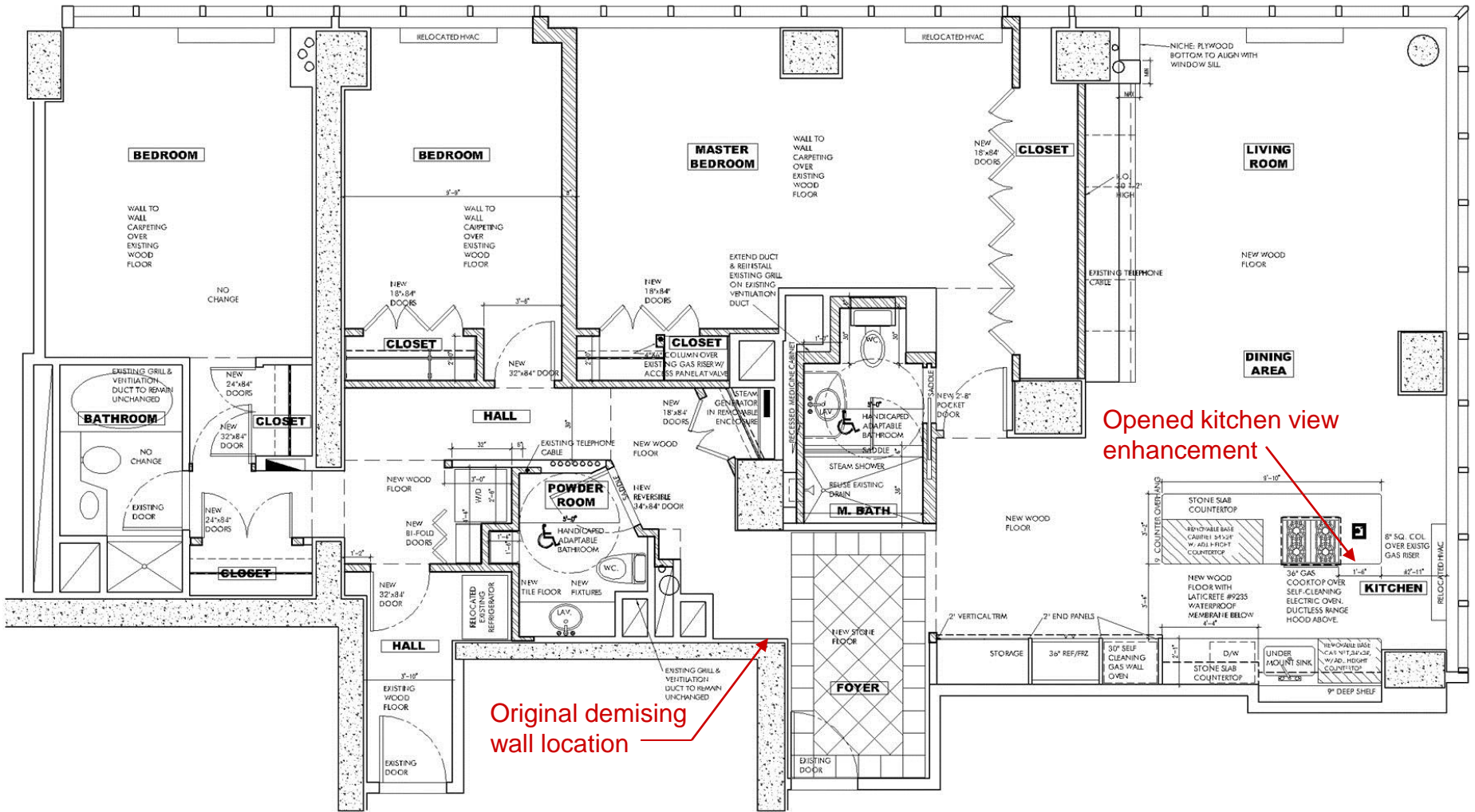
Large vacation home in Telluride Colorado

As published in Architectural Digest:



High Rise

Previously two smaller apartments combined into one, with river views



High Rise

Previously two smaller apartments combined into one, with river views

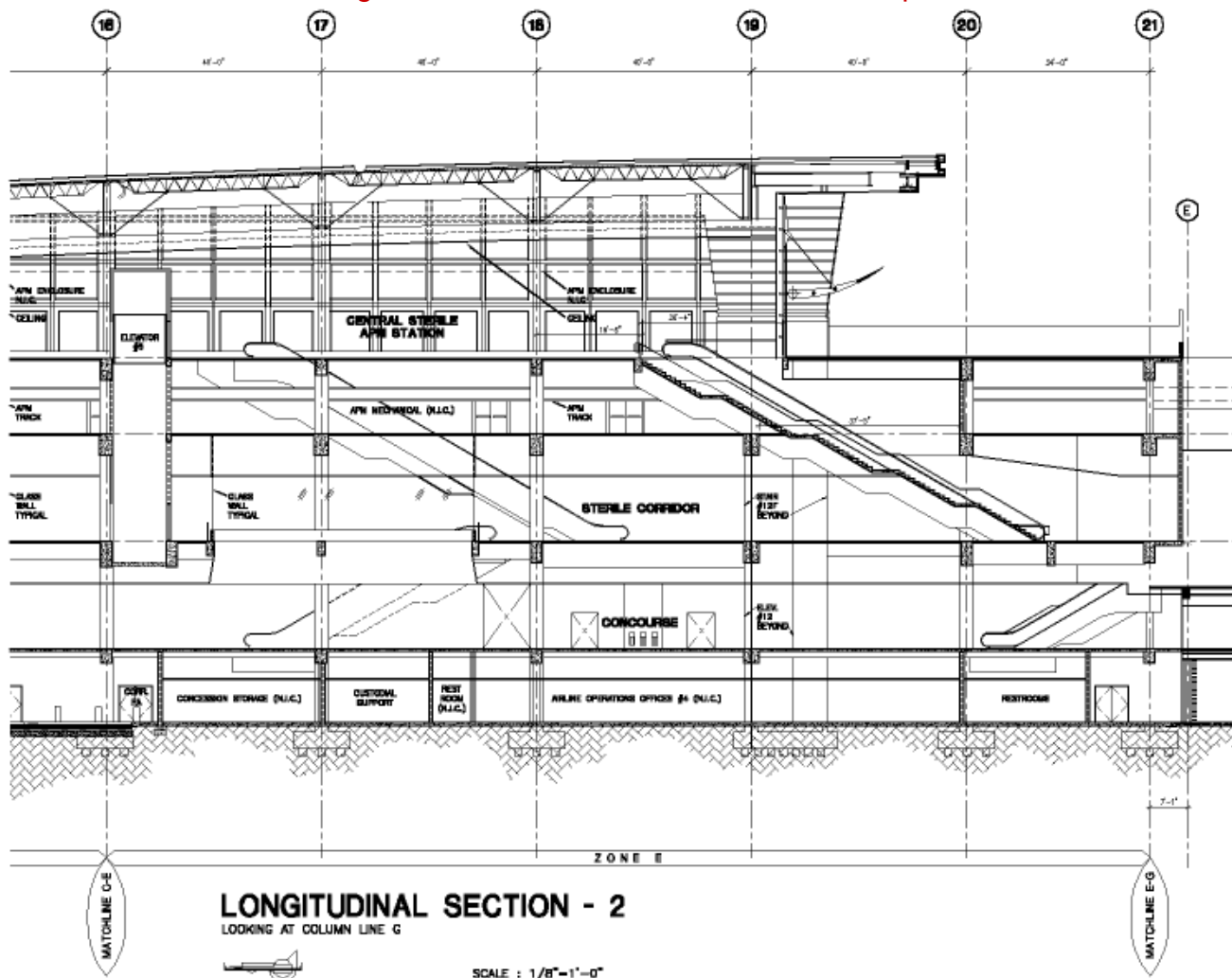
This high-rise apartment-combination project is at Lincoln Center, Manhattan. We found the only passage point around the mechanical shafts and through the structural demising wall satisfying everyone. Also, opening up the kitchen to the exterior windows and south river view dramatically enhanced this dwelling.

Opened kitchen
view
enhancement



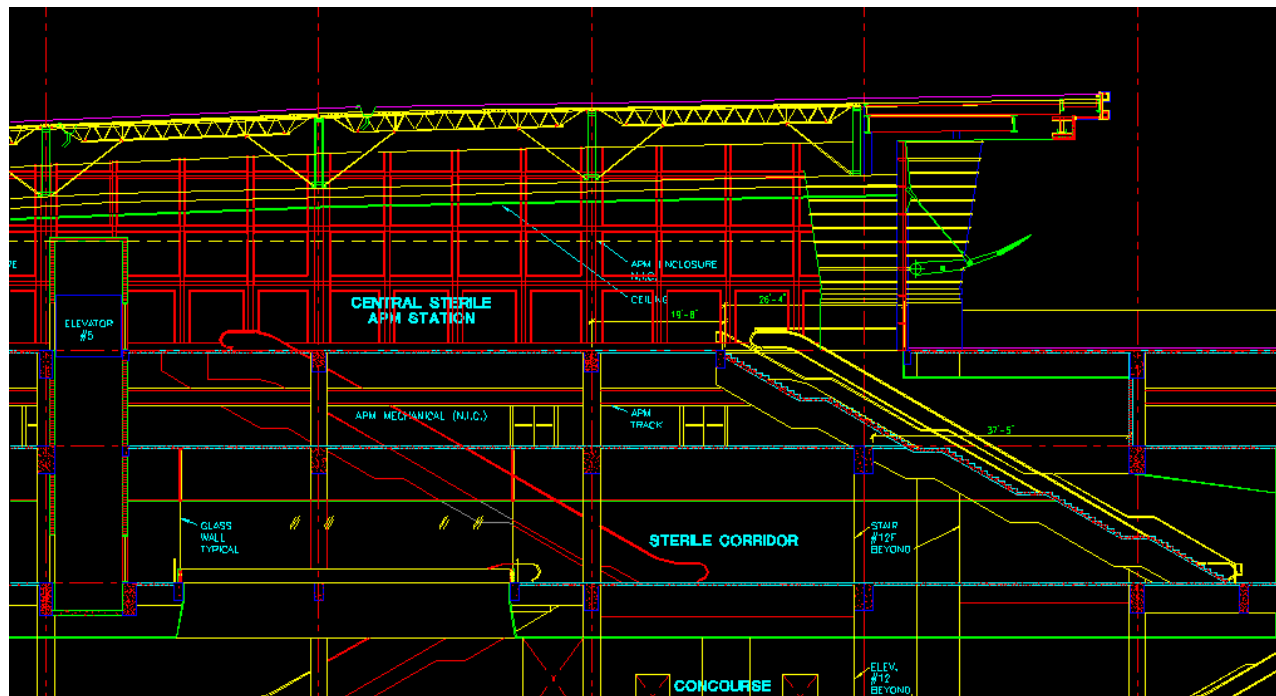
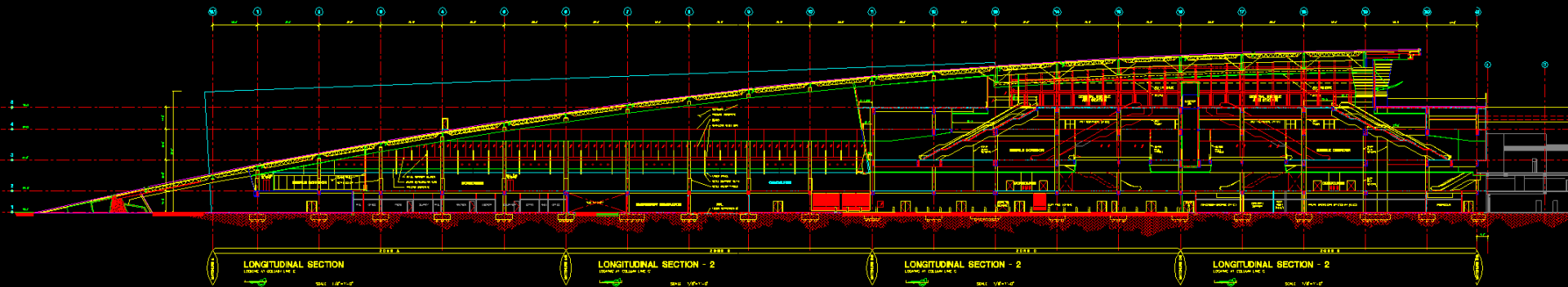
Airport

Using my experience with the FAA laying out airport equipment, we were part of the team working with Gensler to design the new International Terminal for MIA. These drawings show the areas for which we were responsible.

[illegible]

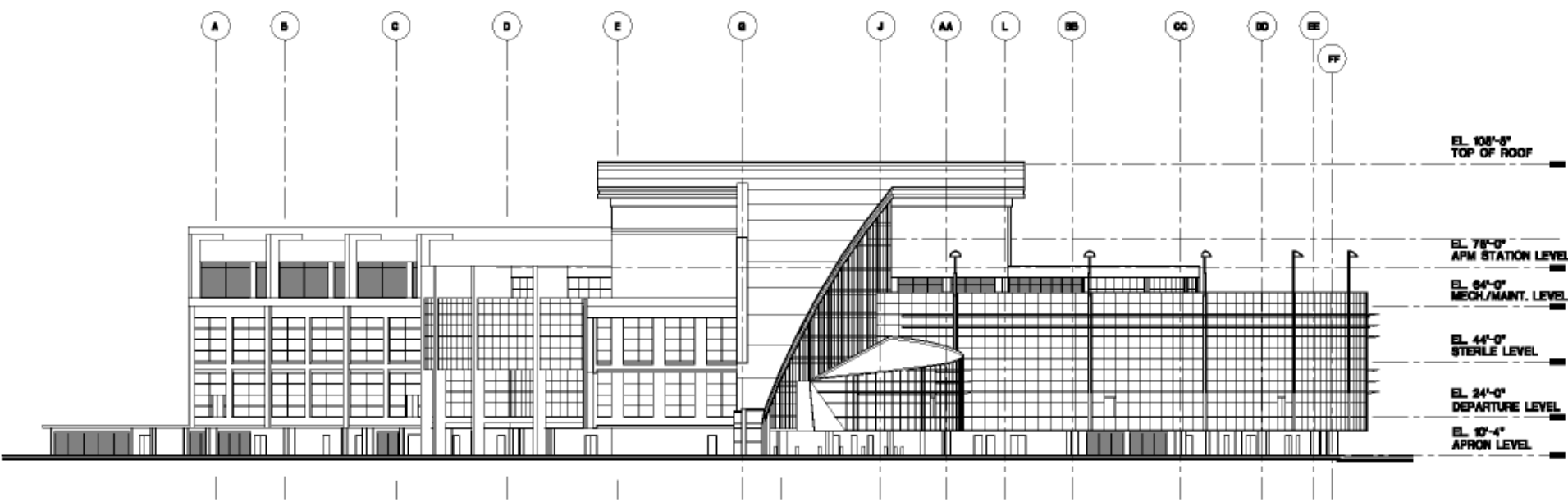
Airport

X-reference linked building sections

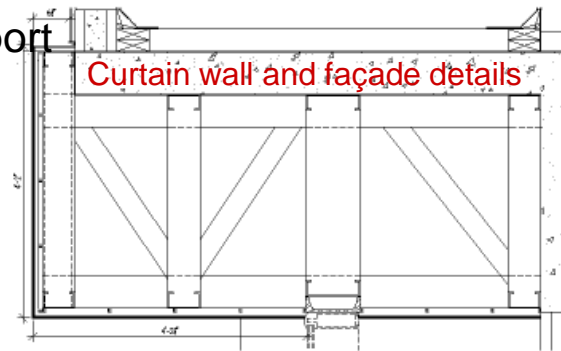


Airport

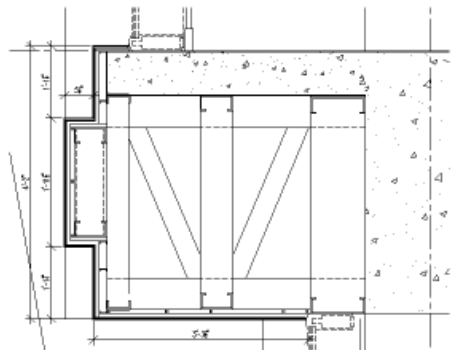
Building elevations



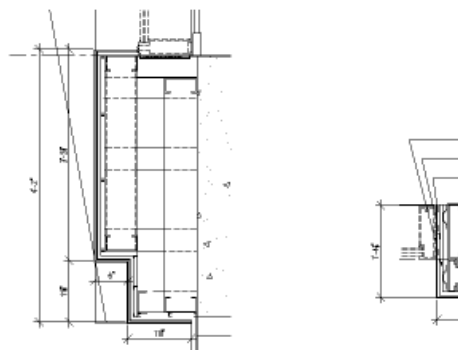
Curtain wall and façade details



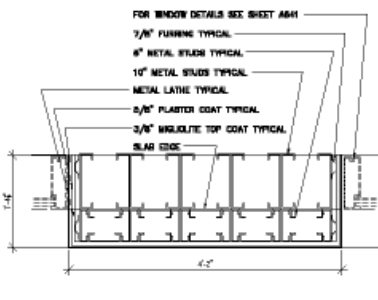
6 WEST LIGHT GAUGE WINDOW WALL SECTION DETAIL FLOOR 4
SCALE: 1/4" = 1'-0"



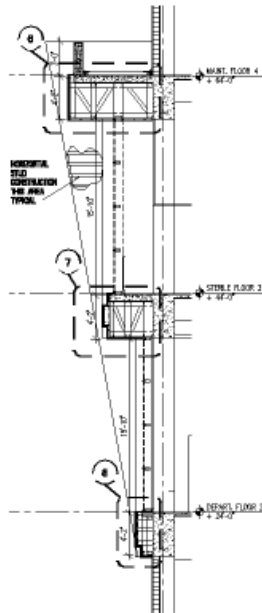
7 WEST LIGHT GAUGE WINDOW WALL SECTION DETAIL FLOOR 4
SCALE: 1/4" = 1'-0"



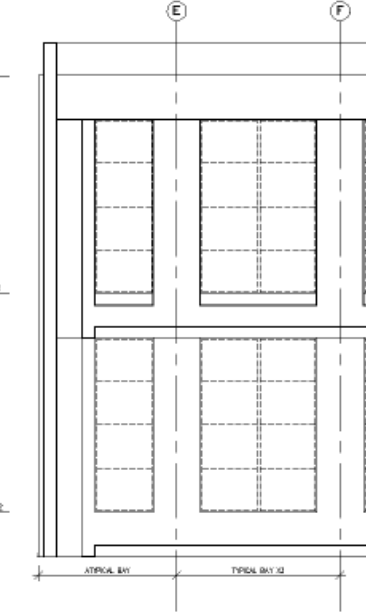
8 WALL SECTION DETAIL FLOOR 4
SCALE: 1/4" = 1'-0"



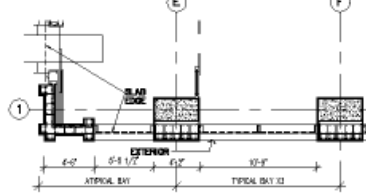
4 TYPICAL LT. GAUGE WINDOW WALL PLAN DETAIL
SCALE: 1/4" = 1'-0"



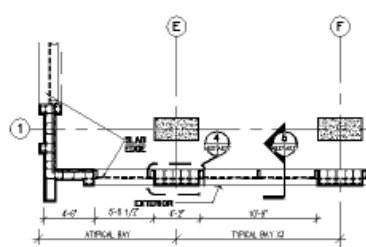
5 W. CURTAIN WALL SECT.
SCALE: 1/4" = 1'-0"



1 WEST LIGHT GAUGE WINDOW WALL ELEVATION
SCALE: 1/4" = 1'-0"



2 WEST LT. GAUGE WINDOW WALL PLAN FLOOR 2
SCALE: 1/4" = 1'-0"



3 WEST LT. GAUGE WINDOW WALL PLAN FLOOR 3
SCALE: 1/4" = 1'-0"

GENERAL NOTES:
1. ALL DIMENSIONS ARE IN FEET AND INCHES.
2. ALL MATERIALS SHALL BE AS SHOWN OR APPROVED BY THE ARCHITECT.
3. ALL WORK SHALL BE IN ACCORDANCE WITH THE LATEST EDITIONS OF THE BUILDING CODES AND SPECIFICATIONS.
4. ALL WORK SHALL BE COMPLETED WITHIN THE SPECIFIED TIME FRAME.
5. ALL WORK SHALL BE DONE IN ACCORDANCE WITH THE LATEST EDITIONS OF THE BUILDING CODES AND SPECIFICATIONS.
6. ALL WORK SHALL BE COMPLETED WITHIN THE SPECIFIED TIME FRAME.
7. ALL WORK SHALL BE DONE IN ACCORDANCE WITH THE LATEST EDITIONS OF THE BUILDING CODES AND SPECIFICATIONS.
8. ALL WORK SHALL BE COMPLETED WITHIN THE SPECIFIED TIME FRAME.
9. ALL WORK SHALL BE DONE IN ACCORDANCE WITH THE LATEST EDITIONS OF THE BUILDING CODES AND SPECIFICATIONS.
10. ALL WORK SHALL BE COMPLETED WITHIN THE SPECIFIED TIME FRAME.

**Miami International Airport
'E' Satellite Extension**
Metro-Dade Aviation Department
Miami, Florida 33169

RONALD E. FRAZIER & ASSOCIATES, P.A.
Architects • Planning Consultants • Construction Services

2000 Biscayne Boulevard, Suite 200
Miami, Florida 33132
Tel: 305.477.0000
Fax: 305.477.0001

**ARCHITECTURE AND INTERIOR DESIGN
CONSULTING ARCHITECT**

Gensler
2000 Biscayne Boulevard, Suite 200
Miami, Florida 33132
Tel: 305.477.0000
Fax: 305.477.0001

BLISS & NYITRAY, INC.
2000 Biscayne Boulevard, Suite 200
Miami, Florida 33132
Tel: 305.477.0000
Fax: 305.477.0001

William A. Barry and Associates, Inc.
2000 Biscayne Boulevard, Suite 200
Miami, Florida 33132
Tel: 305.477.0000
Fax: 305.477.0001

KUNDE, SPECHER & ASSOC. INC.
2000 Biscayne Boulevard, Suite 200
Miami, Florida 33132
Tel: 305.477.0000
Fax: 305.477.0001

JACK TRAVIS ARCHITECT
2000 Biscayne Boulevard, Suite 200
Miami, Florida 33132
Tel: 305.477.0000
Fax: 305.477.0001

THE ARCHITECTS HALL DESIGNERS, INC.
2000 Biscayne Boulevard, Suite 200
Miami, Florida 33132
Tel: 305.477.0000
Fax: 305.477.0001

CA LAYMORE STUDIO
2000 Biscayne Boulevard, Suite 200
Miami, Florida 33132
Tel: 305.477.0000
Fax: 305.477.0001

HARRISON CONSTRUCTION CORPORATION
2000 Biscayne Boulevard, Suite 200
Miami, Florida 33132
Tel: 305.477.0000
Fax: 305.477.0001

P & B CONSULTANTS
2000 Biscayne Boulevard, Suite 200
Miami, Florida 33132
Tel: 305.477.0000
Fax: 305.477.0001

Architectural Design Consultants
2000 Biscayne Boulevard, Suite 200
Miami, Florida 33132
Tel: 305.477.0000
Fax: 305.477.0001

Architectural Design Consultants
2000 Biscayne Boulevard, Suite 200
Miami, Florida 33132
Tel: 305.477.0000
Fax: 305.477.0001

Architectural Design Consultants
2000 Biscayne Boulevard, Suite 200
Miami, Florida 33132
Tel: 305.477.0000
Fax: 305.477.0001

Architectural Design Consultants
2000 Biscayne Boulevard, Suite 200
Miami, Florida 33132
Tel: 305.477.0000
Fax: 305.477.0001

Architectural Design Consultants
2000 Biscayne Boulevard, Suite 200
Miami, Florida 33132
Tel: 305.477.0000
Fax: 305.477.0001

Architectural Design Consultants
2000 Biscayne Boulevard, Suite 200
Miami, Florida 33132
Tel: 305.477.0000
Fax: 305.477.0001

Architectural Design Consultants
2000 Biscayne Boulevard, Suite 200
Miami, Florida 33132
Tel: 305.477.0000
Fax: 305.477.0001

Architectural Design Consultants
2000 Biscayne Boulevard, Suite 200
Miami, Florida 33132
Tel: 305.477.0000
Fax: 305.477.0001

Architectural Design Consultants
2000 Biscayne Boulevard, Suite 200
Miami, Florida 33132
Tel: 305.477.0000
Fax: 305.477.0001

Architectural Design Consultants
2000 Biscayne Boulevard, Suite 200
Miami, Florida 33132
Tel: 305.477.0000
Fax: 305.477.0001

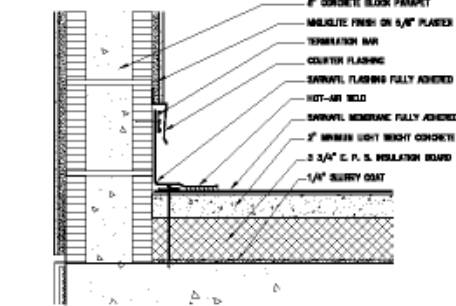
Architectural Design Consultants
2000 Biscayne Boulevard, Suite 200
Miami, Florida 33132
Tel: 305.477.0000
Fax: 305.477.0001

Roof plans

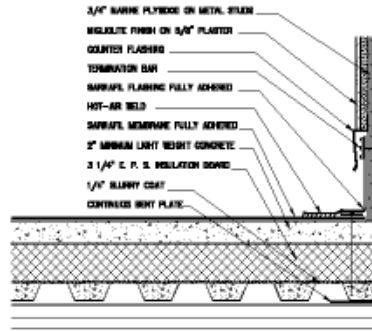


Airport

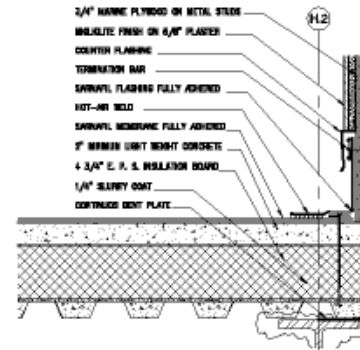
Roof details



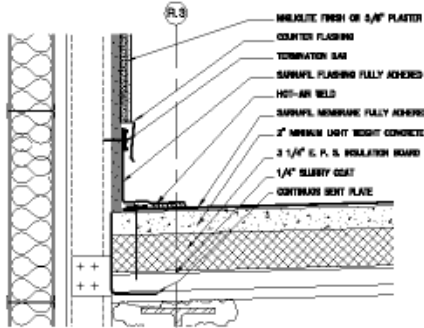
ROOF MEMBRANE FLASHING DETAIL
SCALE: 3" = 1'-0"



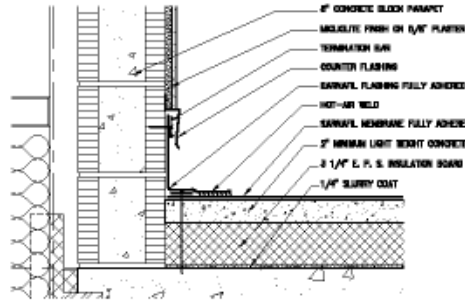
ROOF MEMBRANE FLASHING DETAIL
SCALE: 3" = 1'-0"



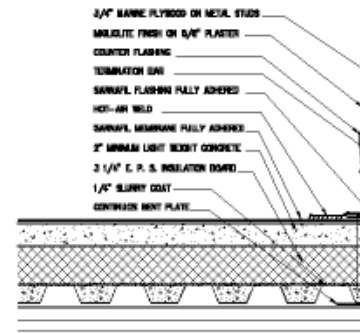
ROOF MEMBRANE FLASHING DETAIL
SCALE: 3" = 1'-0"



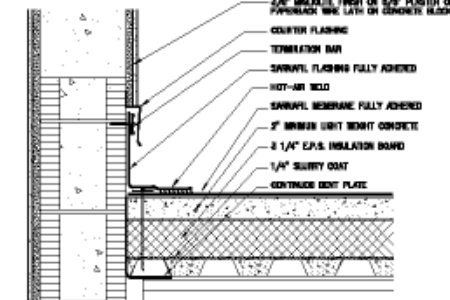
ROOF MEMBRANE FLASHING DETAIL
SCALE: 3" = 1'-0"



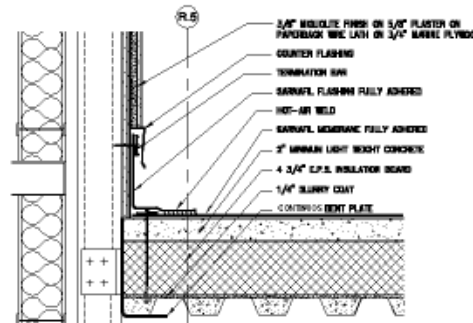
ROOF MEMBRANE FLASHING DETAIL
SCALE: 3" = 1'-0"



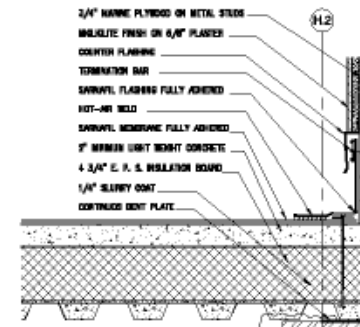
ROOF MEMBRANE FLASHING DETAIL
SCALE: 3" = 1'-0"



ROOF MEMBRANE FLASHING DETAIL
SCALE: 3" = 1'-0"



ROOF MEMBRANE FLASHING DETAIL
SCALE: 3" = 1'-0"



ROOF MEMBRANE FLASHING DETAIL
SCALE: 3" = 1'-0"

**Miami International Airport
'E' Satellite Extension**
Metro-Dade Aviation Department
Miami, Florida 33159

**RONALD E. FRAZIER &
ASSOCIATES, P.A.**

Architects • Planning • Construction Services
8000 Macypine Boulevard, Suite 200
Miami, Florida 33157
Tel. 305.673.8000
Fax 305.673.8001

**Architecture and Interior Design
Consulting Architect**

Gensler
8000 Macypine, Suite 200
Miami, Florida 33157
Tel. 305.673.8000
Fax 305.673.8001

BLISS & WITRAY, INC.
Consulting Engineers
41 S.W. Le Jeune Road
Miami, Florida 33135
Tel. 305.442.7555
Fax 305.442.7556

**William A. Berry and
Associates, Inc.**
Consulting Engineers
7100 N.W. 12 Street, Suite 214
Miami, Florida 33157
Tel. 305.673.8000
Fax 305.673.8001

KUNDE, SPRECHER & ASSOC. INC.
Engineers, Architects, Construction Managers
18700 N. Kendall Avenue, Suite 400
Miami, Florida 33188
Tel. 305.442.7555
Fax 305.442.7556

JACK TRAVIS ARCHITECT
Architect
401 S. W. 12 Street
Miami, Florida 33135
Tel. 305.442.7555
Fax 305.442.7556

THE ARCHITECTS HALL DESIGNERS, INC.
Architectural Design Consultants
800 N.W. 12 Street
Miami, Florida 33135
Tel. 305.442.7555
Fax 305.442.7556

C.J. LAYMORE STUDIO
Signal Designer
800 N.W. 12 Street, Suite 400
Miami, Florida 33135
Tel. 305.442.7555
Fax 305.442.7556

HARRISON CONSTRUCTION CORPORATION
Civil Engineering
401 S.W. 12 Street
Miami, Florida 33135
Tel. 305.442.7555
Fax 305.442.7556

P & D CONSULTANTS
Roofing Planning Consultants
1800 N.W. 12 Street, Suite 200
Miami, Florida 33135
Tel. 305.442.7555
Fax 305.442.7556

REVISIONS
No. Date Description By Check

KEY PLAN
E

Project Name MIAMI INTERNATIONAL AIRPORT
Client METRO-DADE AVIATION DEPARTMENT
Design Title ROOF MEMBRANE FLASHING DETAILS
Drawn By MFL/ST/2005
Scale 3" = 1'-0"

REVISIONS
No. Date Description By Check

KEY PLAN
E

Project Name MIAMI INTERNATIONAL AIRPORT
Client METRO-DADE AVIATION DEPARTMENT
Design Title ROOF MEMBRANE FLASHING DETAILS
Drawn By MFL/ST/2005
Scale 3" = 1'-0"

REVISIONS
No. Date Description By Check

KEY PLAN
E

Project Name MIAMI INTERNATIONAL AIRPORT
Client METRO-DADE AVIATION DEPARTMENT
Design Title ROOF MEMBRANE FLASHING DETAILS
Drawn By MFL/ST/2005
Scale 3" = 1'-0"

REVISIONS
No. Date Description By Check

KEY PLAN
E

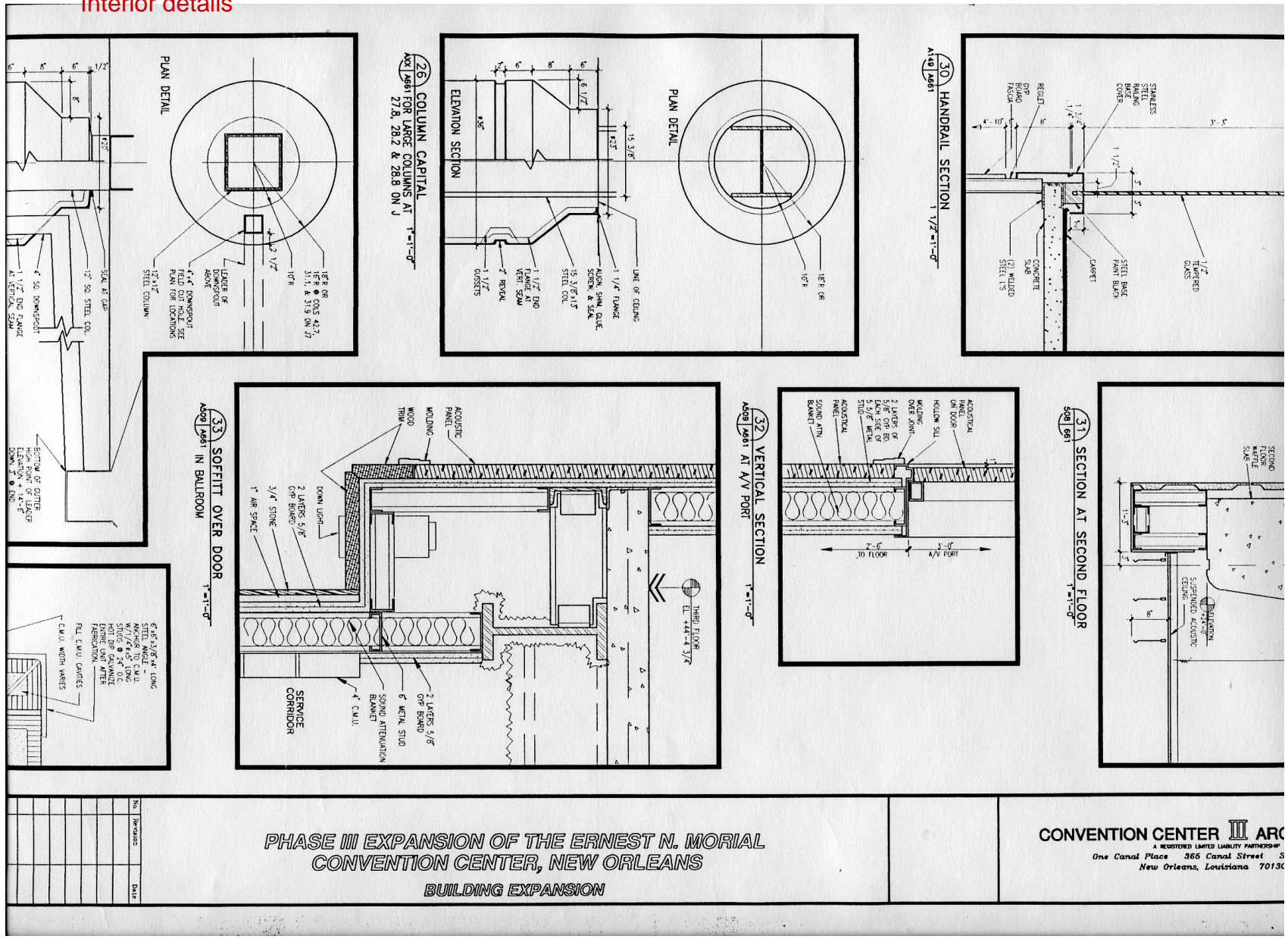
Project Name MIAMI INTERNATIONAL AIRPORT
Client METRO-DADE AVIATION DEPARTMENT
Design Title ROOF MEMBRANE FLASHING DETAILS
Drawn By MFL/ST/2005
Scale 3" = 1'-0"

REVISIONS
No. Date Description By Check

KEY PLAN
E

Convention Center

Interior details



CONVENTION CENTER III ARC
A REGISTERED LIMITED LIABILITY PARTNERSHIP
One Canal Place 366 Canal Street 5
New Orleans, Louisiana 70130