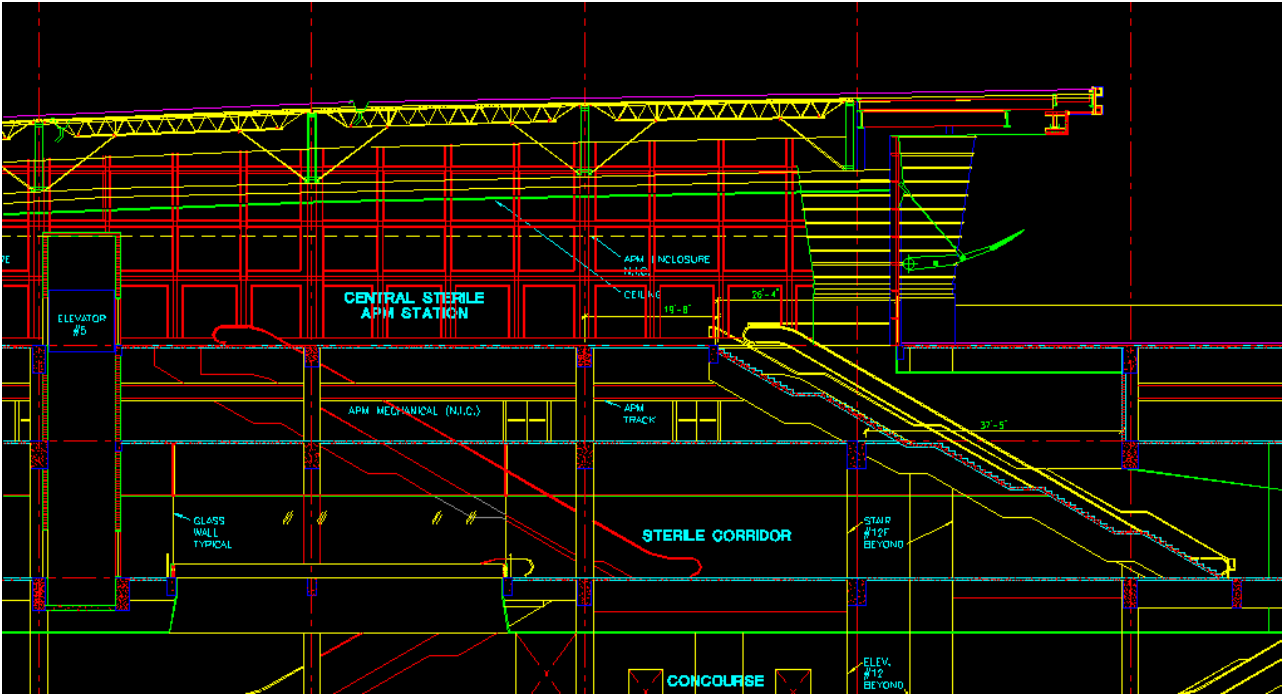
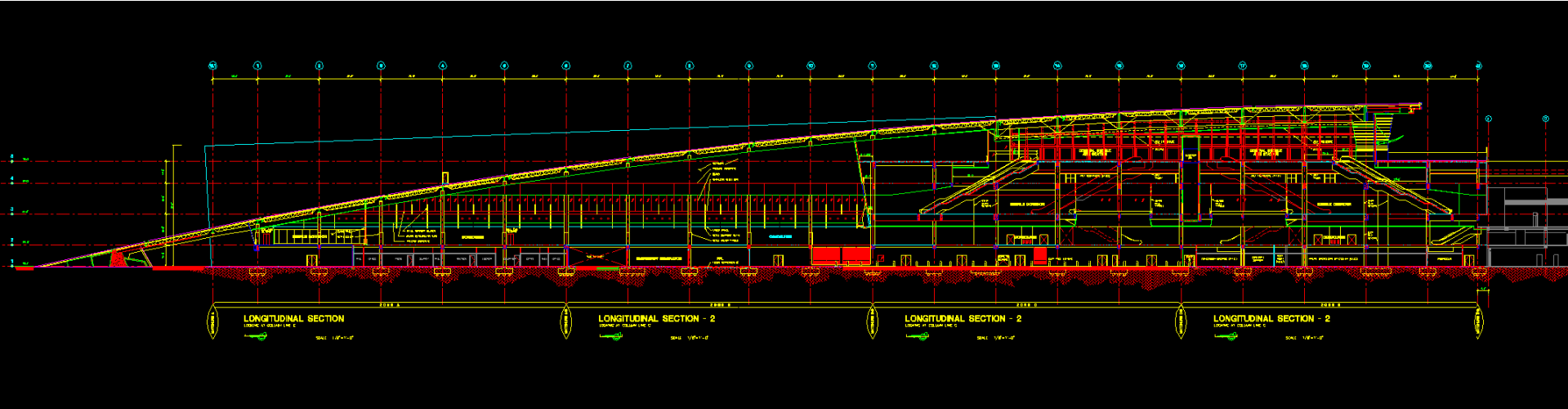


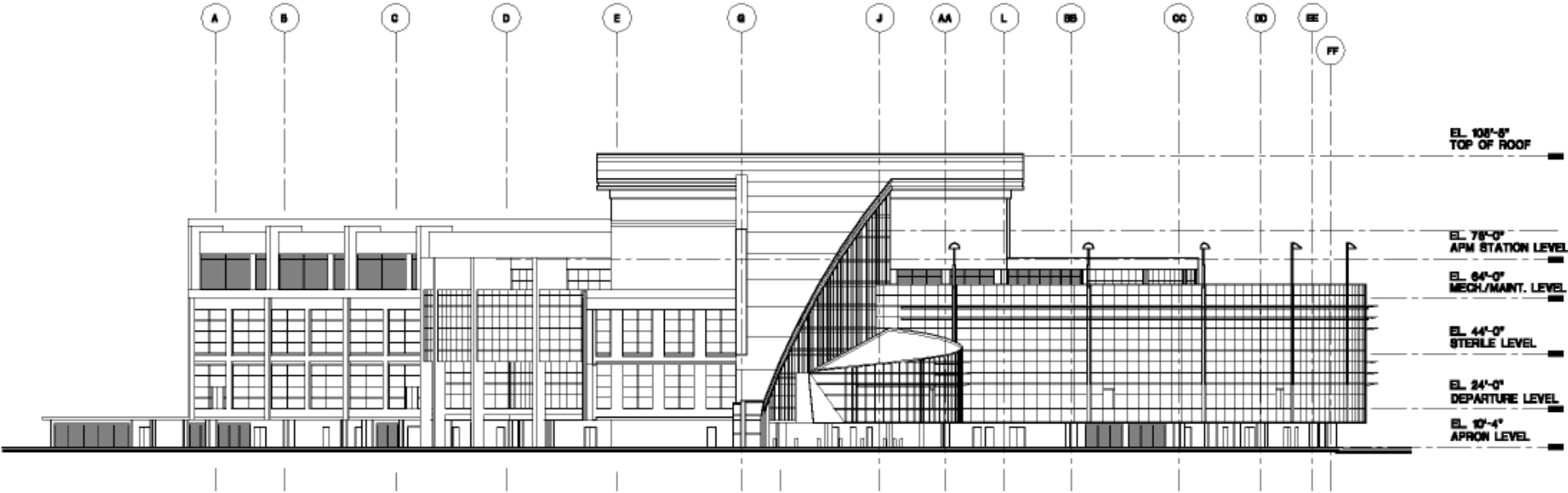
Airport

X-reference linked building sections



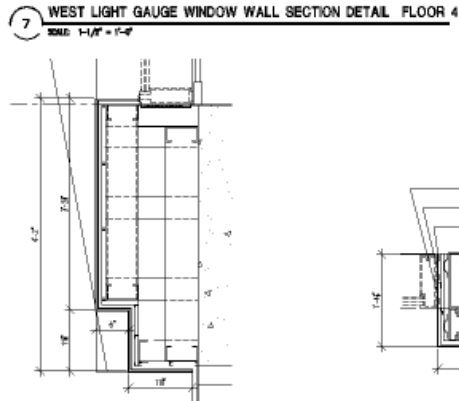
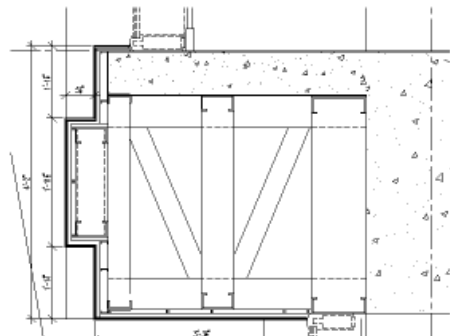
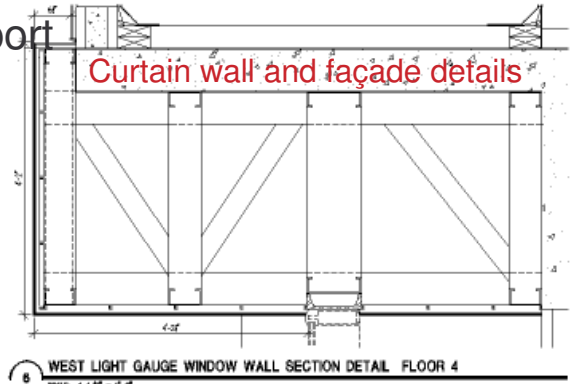
Airport

Building elevations

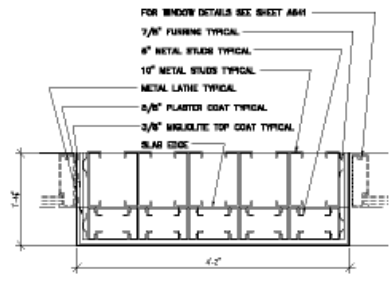


Airport

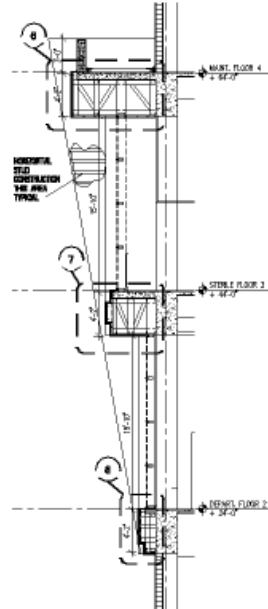
Curtain wall and façade details



8 WALL SECTION DETAIL FLOOR 4
SCALE: 1/4" = 1'-0"

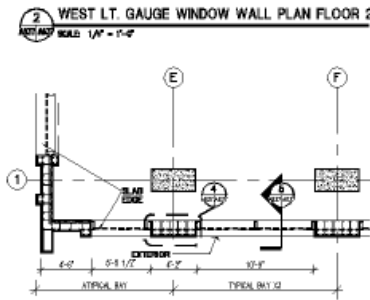
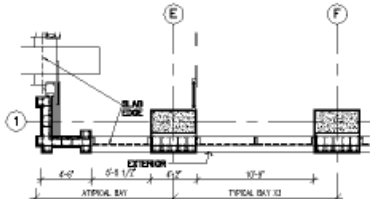


4 TYPICAL LT. GAUGE WINDOW WALL PLAN DETAIL
SCALE: 1/4" = 1'-0"



5 W. CURTAIN WALL SECT.
SCALE: 1/4" = 1'-0"

1 WEST LIGHT GAUGE WINDOW WALL ELEVATION
SCALE: 1/4" = 1'-0"



3 WEST LT. GAUGE WINDOW WALL PLAN FLOOR 3
SCALE: 1/4" = 1'-0"



PRECAST CONCRETE GENERAL NOTES:

BLOWING AND VIBRATION NOTES:

- B1.1 ALUMINUM FINISH MEDIUM TEXTURE
- B1.2 1/2" THICK LAMINATED / INSULATED / ABSORPTIVE / SOUND EVIDENCE BOARD
- B1.3 1/2" THICK LAMINATED / INSULATED / ABSORPTIVE / SOUND EVIDENCE BOARD
- B1.4 PRECAST CONCRETE BANK PANEL AT OPERABLE FLOOR LEVEL
- B1.5 PRECAST CONCRETE BANK PANEL AT OPERABLE FLOOR LEVEL
- B1.6 1/2" THICK LAMINATED / INSULATED / ABSORPTIVE / SOUND EVIDENCE BOARD
- B1.7 1/2" THICK LAMINATED / INSULATED / ABSORPTIVE / SOUND EVIDENCE BOARD
- B1.8 1/2" THICK LAMINATED / INSULATED / ABSORPTIVE / SOUND EVIDENCE BOARD
- B1.9 1/2" THICK LAMINATED / INSULATED / ABSORPTIVE / SOUND EVIDENCE BOARD
- B1.10 1/2" THICK LAMINATED / INSULATED / ABSORPTIVE / SOUND EVIDENCE BOARD
- B1.11 1/2" THICK LAMINATED / INSULATED / ABSORPTIVE / SOUND EVIDENCE BOARD
- B1.12 1/2" THICK LAMINATED / INSULATED / ABSORPTIVE / SOUND EVIDENCE BOARD
- B1.13 1/2" THICK LAMINATED / INSULATED / ABSORPTIVE / SOUND EVIDENCE BOARD
- B1.14 1/2" THICK LAMINATED / INSULATED / ABSORPTIVE / SOUND EVIDENCE BOARD
- B1.15 1/2" THICK LAMINATED / INSULATED / ABSORPTIVE / SOUND EVIDENCE BOARD
- B1.16 1/2" THICK LAMINATED / INSULATED / ABSORPTIVE / SOUND EVIDENCE BOARD
- B1.17 1/2" THICK LAMINATED / INSULATED / ABSORPTIVE / SOUND EVIDENCE BOARD
- B1.18 1/2" THICK LAMINATED / INSULATED / ABSORPTIVE / SOUND EVIDENCE BOARD
- B1.19 1/2" THICK LAMINATED / INSULATED / ABSORPTIVE / SOUND EVIDENCE BOARD
- B1.20 1/2" THICK LAMINATED / INSULATED / ABSORPTIVE / SOUND EVIDENCE BOARD
- B1.21 1/2" THICK LAMINATED / INSULATED / ABSORPTIVE / SOUND EVIDENCE BOARD
- B1.22 1/2" THICK LAMINATED / INSULATED / ABSORPTIVE / SOUND EVIDENCE BOARD
- B1.23 1/2" THICK LAMINATED / INSULATED / ABSORPTIVE / SOUND EVIDENCE BOARD
- B1.24 1/2" THICK LAMINATED / INSULATED / ABSORPTIVE / SOUND EVIDENCE BOARD

WALL NOTES:

- W1.1 PRECAST CONCRETE WALL
- W1.2 ALUMINUM FINISH MEDIUM TEXTURE
- W1.3 1/2" THICK LAMINATED / INSULATED / ABSORPTIVE / SOUND EVIDENCE BOARD
- W1.4 1/2" THICK LAMINATED / INSULATED / ABSORPTIVE / SOUND EVIDENCE BOARD
- W1.5 1/2" THICK LAMINATED / INSULATED / ABSORPTIVE / SOUND EVIDENCE BOARD
- W1.6 1/2" THICK LAMINATED / INSULATED / ABSORPTIVE / SOUND EVIDENCE BOARD
- W1.7 1/2" THICK LAMINATED / INSULATED / ABSORPTIVE / SOUND EVIDENCE BOARD
- W1.8 1/2" THICK LAMINATED / INSULATED / ABSORPTIVE / SOUND EVIDENCE BOARD
- W1.9 1/2" THICK LAMINATED / INSULATED / ABSORPTIVE / SOUND EVIDENCE BOARD
- W1.10 1/2" THICK LAMINATED / INSULATED / ABSORPTIVE / SOUND EVIDENCE BOARD
- W1.11 1/2" THICK LAMINATED / INSULATED / ABSORPTIVE / SOUND EVIDENCE BOARD
- W1.12 1/2" THICK LAMINATED / INSULATED / ABSORPTIVE / SOUND EVIDENCE BOARD
- W1.13 1/2" THICK LAMINATED / INSULATED / ABSORPTIVE / SOUND EVIDENCE BOARD
- W1.14 1/2" THICK LAMINATED / INSULATED / ABSORPTIVE / SOUND EVIDENCE BOARD
- W1.15 1/2" THICK LAMINATED / INSULATED / ABSORPTIVE / SOUND EVIDENCE BOARD
- W1.16 1/2" THICK LAMINATED / INSULATED / ABSORPTIVE / SOUND EVIDENCE BOARD
- W1.17 1/2" THICK LAMINATED / INSULATED / ABSORPTIVE / SOUND EVIDENCE BOARD
- W1.18 1/2" THICK LAMINATED / INSULATED / ABSORPTIVE / SOUND EVIDENCE BOARD
- W1.19 1/2" THICK LAMINATED / INSULATED / ABSORPTIVE / SOUND EVIDENCE BOARD
- W1.20 1/2" THICK LAMINATED / INSULATED / ABSORPTIVE / SOUND EVIDENCE BOARD
- W1.21 1/2" THICK LAMINATED / INSULATED / ABSORPTIVE / SOUND EVIDENCE BOARD
- W1.22 1/2" THICK LAMINATED / INSULATED / ABSORPTIVE / SOUND EVIDENCE BOARD
- W1.23 1/2" THICK LAMINATED / INSULATED / ABSORPTIVE / SOUND EVIDENCE BOARD
- W1.24 1/2" THICK LAMINATED / INSULATED / ABSORPTIVE / SOUND EVIDENCE BOARD

ALUMINUM CURTAIN WALL FINISHING SYSTEM NOTES:

- F1.1 2" FINISH ANGLE AT TOP AND BOTTOM
- F1.2 2" FINISH ANGLE AT TOP AND BOTTOM
- F1.3 2" FINISH ANGLE AT TOP AND BOTTOM
- F1.4 2" FINISH ANGLE AT TOP AND BOTTOM
- F1.5 2" FINISH ANGLE AT TOP AND BOTTOM
- F1.6 2" FINISH ANGLE AT TOP AND BOTTOM
- F1.7 2" FINISH ANGLE AT TOP AND BOTTOM
- F1.8 2" FINISH ANGLE AT TOP AND BOTTOM
- F1.9 2" FINISH ANGLE AT TOP AND BOTTOM
- F1.10 2" FINISH ANGLE AT TOP AND BOTTOM
- F1.11 2" FINISH ANGLE AT TOP AND BOTTOM
- F1.12 2" FINISH ANGLE AT TOP AND BOTTOM
- F1.13 2" FINISH ANGLE AT TOP AND BOTTOM
- F1.14 2" FINISH ANGLE AT TOP AND BOTTOM
- F1.15 2" FINISH ANGLE AT TOP AND BOTTOM
- F1.16 2" FINISH ANGLE AT TOP AND BOTTOM
- F1.17 2" FINISH ANGLE AT TOP AND BOTTOM
- F1.18 2" FINISH ANGLE AT TOP AND BOTTOM
- F1.19 2" FINISH ANGLE AT TOP AND BOTTOM
- F1.20 2" FINISH ANGLE AT TOP AND BOTTOM
- F1.21 2" FINISH ANGLE AT TOP AND BOTTOM
- F1.22 2" FINISH ANGLE AT TOP AND BOTTOM
- F1.23 2" FINISH ANGLE AT TOP AND BOTTOM
- F1.24 2" FINISH ANGLE AT TOP AND BOTTOM



**Miami International Airport
'E' Satellite Extension**
Metro-Dade Aviation Department
Miami, Florida 33169

RONALD E. FRAZIER & ASSOCIATES, P.A.
Architects • Planning Consultants • Construction Services

2325 Wynnton Road, Suite 200
Miami, Florida 33197
Tel: 781.457.8520
FL Registration No. AR-00008775

SUBCONSULTANTS:

Architecture and Interior Design
Consulting Architect
Gensler
3500 Broadway, Suite 500
New York, New York 10022
Tel: 212.269.8500
FL Registration No. AR-00008775

Consulting Engineers
BLISS & NYVITRAV, INC.
P.O. Box 14, Jacksonville
Jacksonville, Florida 32204
Tel: 904.442.7200
FL Registration No. BE-00000075

Consulting Engineers
William A. Berry and Associates, Inc.
7000 N.W. 25 Street, Suite 318
Miami, Florida 33169
Tel: 305.475.0000
FL Registration No. BE-00000075

Electrical
KUNDE, SPRECHER & ASSOC. INC.
Engineers, Architects, Construction Managers
8700 N. Kendall Drive, Suite 200
Miami, Florida 33156
Tel: 305.376.3338
FL Registration No. BE-00000075

Specialty Subconsultants:

JACK TRAVIS ARCHITECT
Architectural Design Consultant
4500 S.W. 38th Avenue
Miami, Florida 33155
Tel: 305.444.8000
FL Registration No. AR-00000075

THE ARCHITECTS HALL DESIGNERS, INC.
Architectural Design Consultant
4500 S.W. 38th Avenue
Miami, Florida 33155
Tel: 305.444.8000
FL Registration No. AR-00000075

Office Designer
999 Palm Beach Blvd., Suite 1000
West Palm Beach, Florida 33411
Tel: 561.833.0000

Construction Consultant
HARRISON CONSTRUCTION CORPORATION
200 N.W. 42nd Avenue
Miami, Florida 33169
Tel: 305.444.8000

Construction Consultant
P & S CONSULTANTS
Airport Planning Consultants
999 Palm Beach Blvd., Suite 100
West Palm Beach, Florida 33411
Tel: 561.833.0000

REVISIONS

No.	Date	By	Issue
1	01-11-00	TEL CONSTRUCTION DOCUMENT	ISSUE SET

Issued and Revisions:

No.	Date	By	Issue
1	01-11-00	TEL CONSTRUCTION DOCUMENT	ISSUE SET

KEY PLAN

Project Name: MIAMI INTERNATIONAL AIRPORT
Subproject Name: 'E' SATELLITE EXTENSION
Sheet Title: WEST WINDOW WALL
Description: WEST WINDOW WALL
Consultant File: WLOTT07EPLWST2.WXD

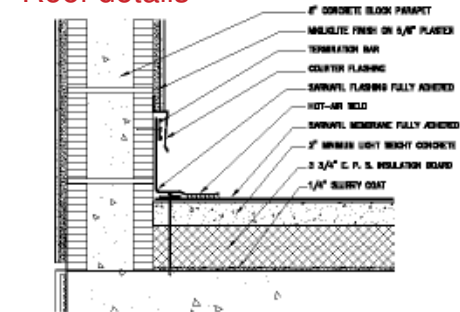
Scale: 1" = 8'-0" (INDICATED)

As Shown and unless material otherwise noted, fabrications original and unapproved work at the contractor's risk and will be held liable. Work not indicated unless otherwise shown or indicated.

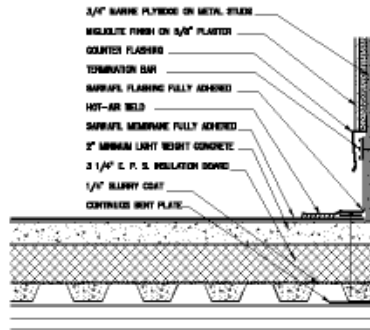
A-637
Reference North

Airport

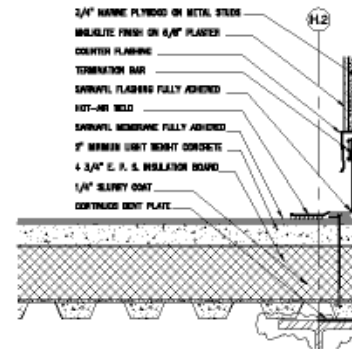
Roof details



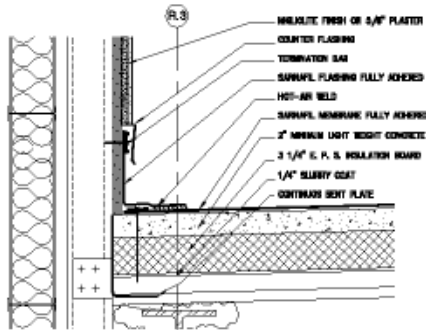
ROOF MEMBRANE FLASHING DETAIL
SCALE: 3/8" = 1'-0"



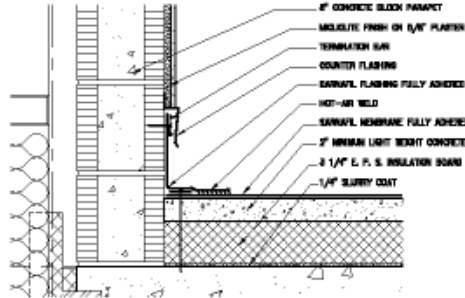
ROOF MEMBRANE FLASHING DETAIL
SCALE: 3/8" = 1'-0"



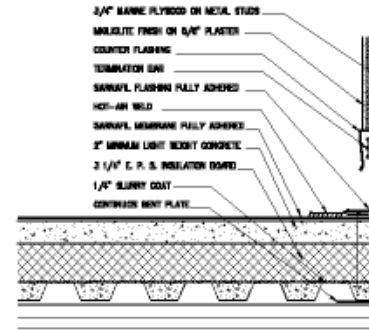
ROOF MEMBRANE FLASHING DETAIL
SCALE: 3/8" = 1'-0"



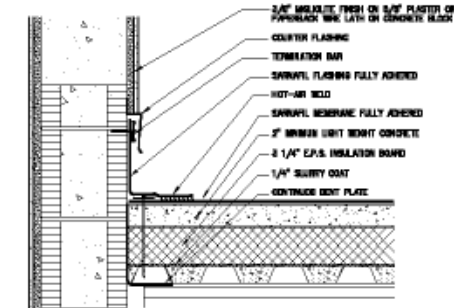
ROOF MEMBRANE FLASHING DETAIL
SCALE: 3/8" = 1'-0"



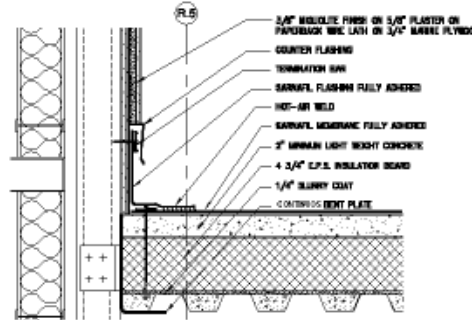
ROOF MEMBRANE FLASHING DETAIL
SCALE: 3/8" = 1'-0"



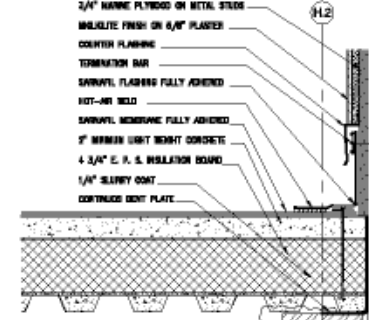
ROOF MEMBRANE FLASHING DETAIL
SCALE: 3/8" = 1'-0"



ROOF MEMBRANE FLASHING DETAIL
SCALE: 3/8" = 1'-0"



ROOF MEMBRANE FLASHING DETAIL
SCALE: 3/8" = 1'-0"



ROOF MEMBRANE FLASHING DETAIL
SCALE: 3/8" = 1'-0"

**Miami International Airport
'E' Satellite Extension**
Metro-Dade Aviation Department
Miami, Florida 33159

**RONALD E. FRAZIER &
ASSOCIATES, P.A.**
Architects - Planning - Construction Services

1900 Biscayne Boulevard, Suite 201
Miami, Florida 33137
Tel. 305.437.7838
Fl. Registration No. 25-000479

Architecture and Interior Design
Consulting Architect

Gensler

2000 Southwest 1st St. Suite 300
South Miami, California 90306
Tel. 305.442.2900
Fax. 305.442.2900

Bliss & Wittray, Inc.
Consulting Engineers

41 SW Le Ave Road
Miami, Florida 33135
Tel. 305.447.7838
Fl. Registration No. 25-000571

William A. Berry and
Associates, Inc.
Consulting Engineers

7700 NW 12 Street, Suite 214
Miami, Florida 33150
Tel. 305.438.0000

R. Edward Tappan, P.E., R.E., Registration No. 25012
Orlando Area, P.E. Registration No. 27152

KUNDE, SPRECHER & ASSOC. INC.
Engineers, Architects, Construction Managers

1870 N. Kendall Drive, Suite 410
Miami, Florida 33143
Tel. 305.438.0000
Fax. 305.438.0000

JACK TRAVIS ARCHITECT
Interior Designer

90 S. 9th Street
Miami, Florida 33130
Tel. 305.358.0000
Fax. 305.358.0000

THE ARCHITECTS HALL BISHOPSON, INC.
Architectural Design Consultants

1000 N. NE 1st Avenue
Miami, Florida 33132
Tel. 305.438.0000
Fax. 305.438.0000

C.J. LAYMORE STUDIO
Digital Designer

107 Park View Drive
Miami, Florida 33139
Tel. 305.438.0000
Fax. 305.438.0000

HARRISON CONSTRUCTION CORPORATION
Civil Engineering

100 SW 1st Street
Miami, Florida 33130
Tel. 305.438.0000
Fax. 305.438.0000

F & S CONSULTANTS
Interior Planning Consultants

100 First & County Road, Suite 200
Miami, Florida 33130
Tel. 305.438.0000

Address	Phone	By	Checked
DATE/REV	THE CONSULTING ENGINEER	DATE/REV	
Name and Version			
No.	Title	Name	By/Checked

KEY PLAN

Project Name: MIAMI INTERNATIONAL AIRPORT
'E' SATELLITE EXTENSION

Sheet Project Number: 010001
Sheet Title: ROOF MEMBRANE FLASHING DETAILS
Company File: MFL07290

Scale: 3/8" = 1'-0"

Reference North

A-167